

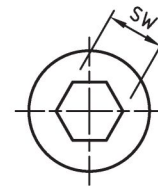
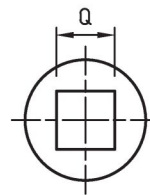
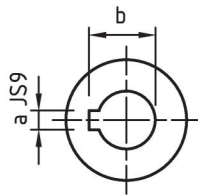
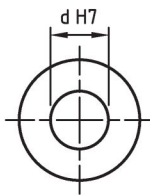
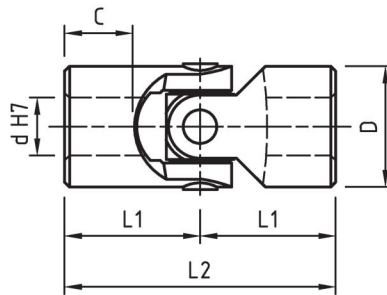


GIUNTI SINGOLI IN ACCIAIO INOX

STAINLESS STEEL SINGLE JOINTS

serie «X»
series (DIN 808)

- Angolo max. 45°
Max angle 45°
- "Esecuzione innesto rapido, vedi pagina 11".
"Quick release execution, see page 11".
- "Esecuzione a morsetto tipo CL1 o CL2, vedi pagine 20 e 21".
"Clamping hub execution type CL1 or CL2, see pages 20 and 21".
- Esecuzioni speciali a richiesta.
Special executions on request.



Mod. Type	Codice / Code	d	D	L2	L1	C	Codice / Code	a	b	Q *	SW *	Peso Weight Kg
01X	SX0S 0600	6	16	34	17	8	SX0S062C	2	7	6	6	0,05
02X	SX0S 0800	8	16	40	20	11	SX0S082C	2	9	8	8	0,05
03X	SX0S 1000	10	22	48	24	12	SX0S102C	3	11,4	10	10	0,10
04X	SX0S 1200	12	25	56	28	13	SX0S122C	4	13,8	12	12	0,16
05X	SX0S 1400	14	28	60	30	14	SX0S142C	5	16,3	14	14	0,20
1X	SX0S 1600	16	32	68	34	16	SX0S162C	5	18,3	16	16	0,30
3X	SX0S 2000	20	42	82	41	18	SX0S202C	6	22,8	20	20	0,60
5X	SX0S 2500	25	50	108	54	26	SX0S252C	8	28,3	25	25	1,20
6X	SX0S 3000	30	58	122	61	29	SX0S302C	8	33,3	30	30	1,85

*= Non sempre disponibile a magazzino / Not always available in stock

