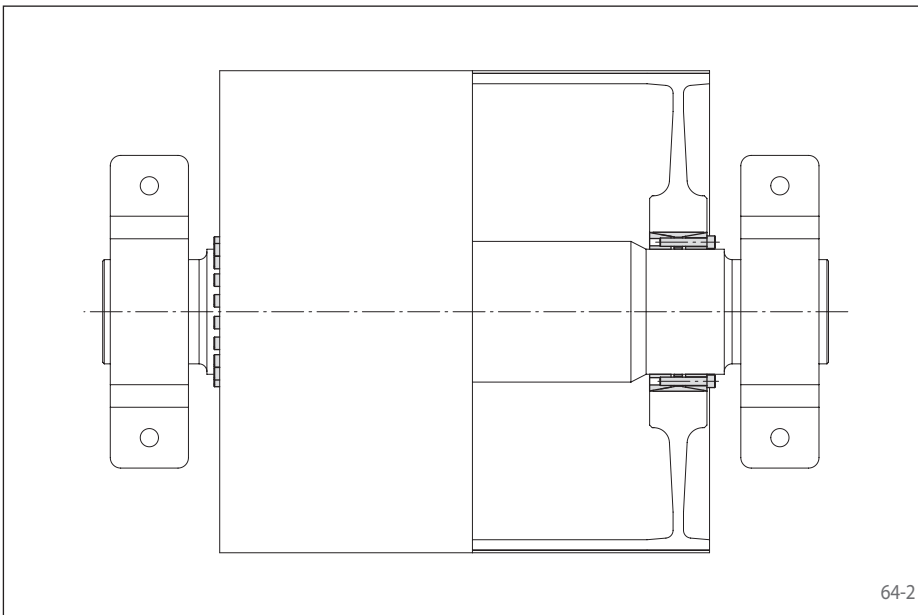


# Cone Clamping Elements RLK 404

centres the hub to the shaft  
high transmissible torques



64-1



64-2

## Transmissible torques and axial forces

The transmissible torques or axial forces listed on the following page are subject to the following tolerances, surface characteristics and material requirements. Please contact us in the case of deviations.

### Tolerances

- h8 for shaft diameter d
- H8 for hub bore D

### Surfaces

Average surface roughness at the contact surfaces between the shaft and the hub bore:  
 $R_z = 10 \dots 25 \mu\text{m}$ .

### Materials

The following apply to the shaft and the hub:

- E-module  $\geq 170 \text{ kN/mm}^2$

## Installation

Please request our installation and operating instructions for Cone Clamping Elements RLK 404.

## Features

- Centres the hub to the shaft
- High transmissible torques
- No axial displacement between hub and shaft during clamping procedure
- Transmissible torque of 7000 Nm up to 1206000 Nm
- For shaft diameters between 70 mm and 600 mm

## Application example

Backlash free attachment of a belt drum to the drive shaft of a conveyor belt with an Cone Clamping Element RLK 404. The Cone Clamping Element centres the belt drum on the drive shaft. As no axial shift occurs during the clamping process, the axial position of the belt drum in relation to the drive shaft remains unchanged.

## Simultaneous transmission of torque and axial force

The transmissible torques M which are shown in the tables apply for axial forces  $F = 0 \text{ kN}$  and conversely, the indicated axial forces F apply to torques  $M = 0 \text{ Nm}$ . If torque and axial force are to be transmitted simultaneously, the transmissible torque and the transmissible axial force are reduced. Please refer to the technical points on pages 72 and 73.

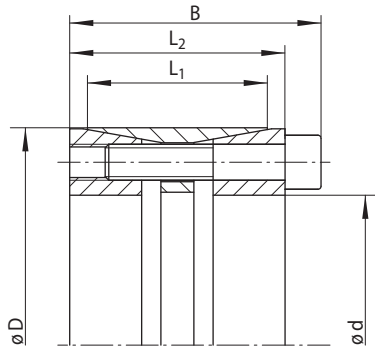
## Example for ordering

Cone Clamping Element RLK 404 for shaft diameter  $d = 100 \text{ mm}$ :

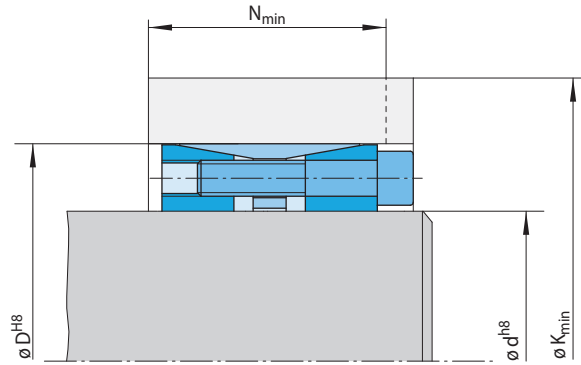
- RLK 404, size 100 x 145  
Article number 4205-100401-000000

# Cone Clamping Elements RLK 404

centres the hub to the shaft  
high transmissible torques



65-1

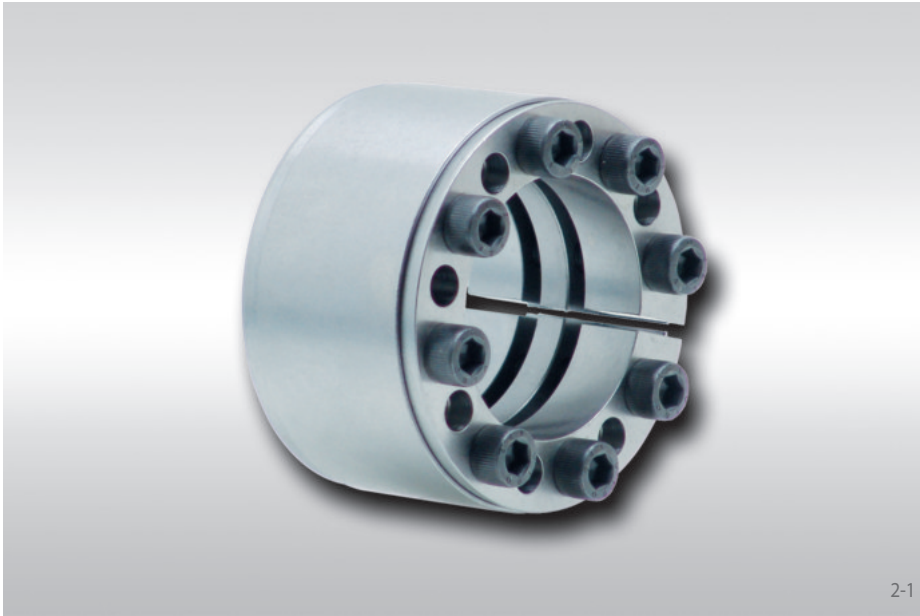


65-2

Size		Dimensions										Technical Data										Article number
d mm	D mm	B mm	L <sub>1</sub> mm	L <sub>2</sub> mm	Yield strength R <sub>e</sub> of the hub material [N/mm <sup>2</sup> ]						Transmissible torque or axial force		Contact pressure at		Clamping screws				Weight kg			
					200	320	500	M	F	Shaft P <sub>W</sub> N/mm <sup>2</sup>	Hub P <sub>N</sub> N/mm <sup>2</sup>	Tightening torque M <sub>S</sub> Nm	Number	Size	Length mm							
70	110	72	50	62	231	70	177	56	150	49	7000	200	195	124	83	8	M 10	50	2,5	4205-070401-000000		
75	115	72	50	62	232	69	180	56	154	49	7500	200	182	119	83	8	M 10	50	2,5	4205-075401-000000		
80	120	72	50	62	270	77	203	60	169	52	10000	250	213	142	83	10	M 10	50	2,6	4205-080401-000000		
85	125	72	50	62	270	76	206	60	173	51	10600	250	201	137	83	10	M 10	50	2,8	4205-085401-000000		
90	130	72	50	62	287	79	219	62	183	53	12400	280	209	145	83	11	M 10	50	2,9	4205-090401-000000		
95	135	72	50	62	287	77	222	61	187	52	13000	280	198	139	83	11	M 10	50	3,3	4205-095401-000000		
100	145	84	60	72	331	92	249	71	207	61	18500	370	217	150	144	10	M 12	60	4,1	4205-100401-000000		
110	155	84	60	72	330	89	255	70	215	60	20000	370	198	140	144	10	M 12	60	4,5	4205-110401-000000		
120	165	84	60	72	352	92	272	72	230	62	24500	400	199	145	144	11	M 12	60	5,0	4205-120401-000000		
130	180	94	65	82	396	105	303	82	254	70	33500	520	207	149	144	14	M 12	70	6,6	4205-130401-000000		
140	190	94	65	82	415	108	319	84	268	71	38500	550	206	152	144	15	M 12	70	7,1	4205-140401-000000		
150	200	94	65	82	416	105	325	83	277	71	41500	550	192	144	144	15	M 12	70	7,5	4205-150401-000000		
160	210	94	65	82	434	107	341	84	291	72	47000	590	192	146	144	16	M 12	70	7,8	4205-160401-000000		
170	225	107	78	93	490	125	378	97	318	82	64000	760	204	154	229	15	M 14	80	10,8	4205-170401-000000		
180	235	107	78	93	491	122	384	96	327	81	68000	760	192	148	229	15	M 14	80	11,3	4205-180401-000000		
190	250	119	88	105	485	129	385	104	333	91	76500	810	161	123	229	16	M 14	80	14,8	4205-190401-000000		
200	260	119	88	105	523	136	412	108	353	94	90500	910	172	133	229	18	M 14	80	15,7	4205-200401-000000		
220	285	127	96	111	557	144	443	116	382	101	113500	1050	164	127	354	15	M 16	90	19,9	4205-220401-000000		
240	305	127	96	111	668	167	516	129	434	109	165500	1400	201	158	354	20	M 16	90	21,5	4205-240401-000000		
260	325	127	96	111	690	167	539	130	457	109	188000	1450	195	156	354	21	M 16	90	22,8	4205-260401-000000		
280	355	131	96	111	757	171	596	131	507	108	226500	1600	219	173	692	15	M 20	90	29,0	4205-280401-000000		
300	375	131	96	111	789	174	626	133	534	110	258500	1700	218	175	692	16	M 20	90	31,2	4205-300401-000000		
320	405	156	124	136	835	204	657	159	561	135	345000	2150	187	148	692	20	M 20	110	45,9	4205-320401-000000		
340	425	156	124	136	840	200	671	158	578	135	366500	2150	176	141	692	20	M 20	110	48,3	4205-340401-000000		
360	455	177	140	155	931	227	735	178	628	152	482500	2700	183	145	945	20	M 22	130	67,9	4205-360401-000000		
380	475	177	140	155	936	223	748	177	645	151	509000	2700	174	139	945	20	M 22	130	71,4	4205-380401-000000		
400	495	177	140	155	994	233	792	183	680	155	589500	2900	182	147	945	22	M 22	130	74,5	4205-400401-000000		
420	515	177	140	155	1049	242	834	188	715	158	675500	3200	189	154	945	24	M 22	130	77,8	4205-420401-000000		
440	535	177	140	155	1055	238	848	187	732	158	707500	3200	180	148	945	24	M 22	130	81,4	4205-440401-000000		
460	555	177	140	155	1062	235	863	185	750	157	739500	3200	172	143	945	24	M 22	130	84,1	4205-460401-000000		
480	575	177	140	155	1092	237	891	187	775	158	804000	3400	172	144	945	25	M 22	130	88,0	4205-480401-000000		
500	595	177	140	155	1101	235	906	186	793	158	837500	3400	165	139	945	25	M 22	130	91,6	4205-500401-000000		
520	615	177	140	155	1174	248	958	194	835	163	975500	3800	178	150	945	28	M 22	130	94,1	4205-520401-000000		
540	635	177	140	155	1182	245	973	193	852	163	1013000	3800	171	146	945	28	M 22	130	97,5	4205-540401-000000		
560	655	182	140	160	1236	251	1016	196	888	165	1125500	4000	180	154	945	30	M 22	130	100,7	4205-560401-000000		
580	675	182	140	160	1246	249	1031	195	906	164	1166000	4000	174	150	945	30	M 22	130	104,2	4205-580401-000000		
600	695	182	140	160	1256	246	1047	194	924	164	1206000	4000	168	145	945	30	M 22	130	107,6	4205-600401-000000		

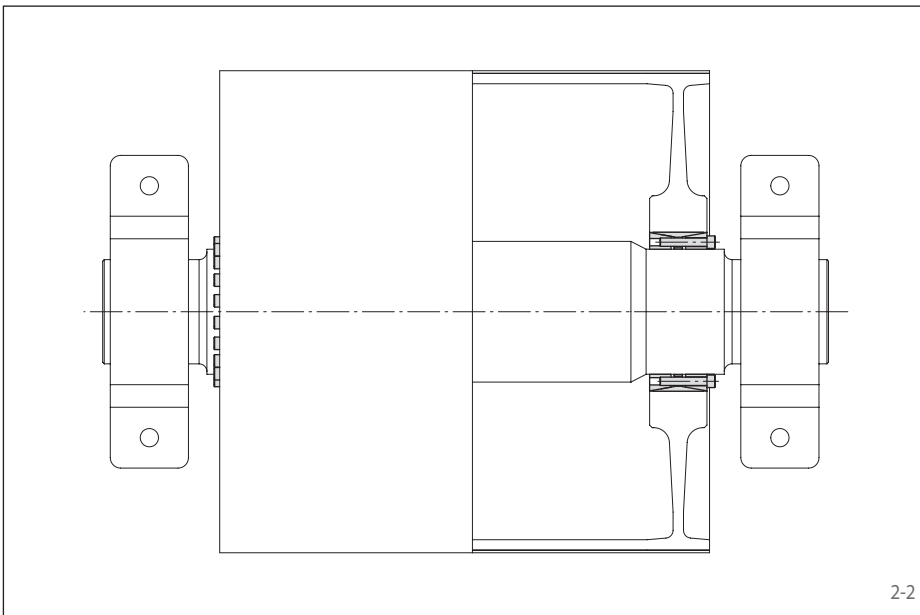
# Cone Clamping Elements RLK 404 light

for applications with low contact pressure



## Features

- For applications with low contact pressure
- Centres the hub to the shaft
- No axial displacement between hub and shaft during clamping procedure
- Transmissible torque of 4 100 Nm up to 722 000 Nm
- For shaft diameters between 70 mm and 600 mm



## Application example

Backlash free attachment of a belt drum to the drive shaft of a conveyor belt with a Cone Clamping Element RLK 404 light.

The Cone Clamping Element centres the belt drum on the drive shaft. As no axial shift occurs during the clamping process, the axial position of the belt drum in relation to the drive shaft remains unchanged.

## Transmissible torques and axial forces

The transmissible torques or axial forces listed on the following page are subject to the following tolerances, surface characteristics and material requirements. Please contact us in the case of deviations.

### Tolerances

- h8 for shaft diameter d
- H8 for hub bore D

### Surfaces

Average surface roughness at the contact surfaces between the shaft and the hub bore:  
 $R_z = 10 \dots 25 \mu\text{m}$ .

### Materials

The following apply to the shaft and the hub:

- E-module  $\geq 170 \text{ kN/mm}^2$

## Installation

Please request our installation and operating instructions for Cone Clamping Elements RLK 404 light.

## Simultaneous transmission of torque and axial force

The transmissible torques M which are shown in the tables apply for axial forces  $F = 0 \text{ kN}$  and conversely, the indicated axial forces F apply to torques  $M = 0 \text{ Nm}$ . If torque and axial force are to be transmitted simultaneously, the transmissible torque and the transmissible axial force are reduced. Please refer to the technical points in catalogue „Shaft-Hub-Connections“.

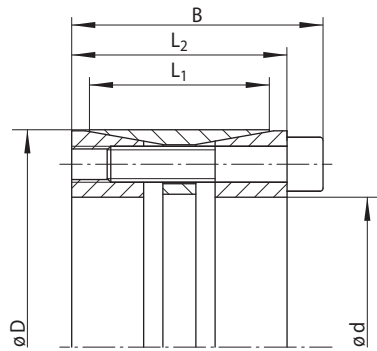
## Example for ordering

Cone Clamping Element RLK 404 light for shaft diameter  $d = 100 \text{ mm}$ :

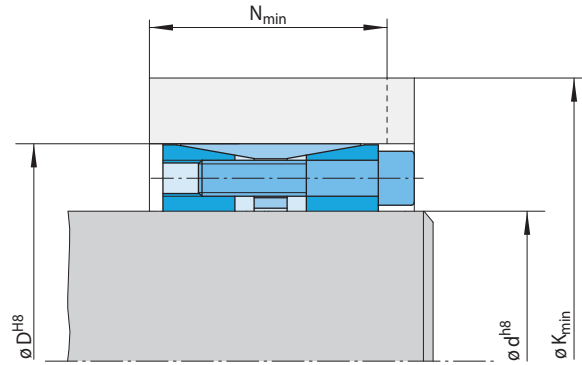
- RLK 404 light, size 100 x 145  
Article number 4205-100402-000000

# Cone Clamping Elements RLK 404 light

for applications with low contact pressure



3-1

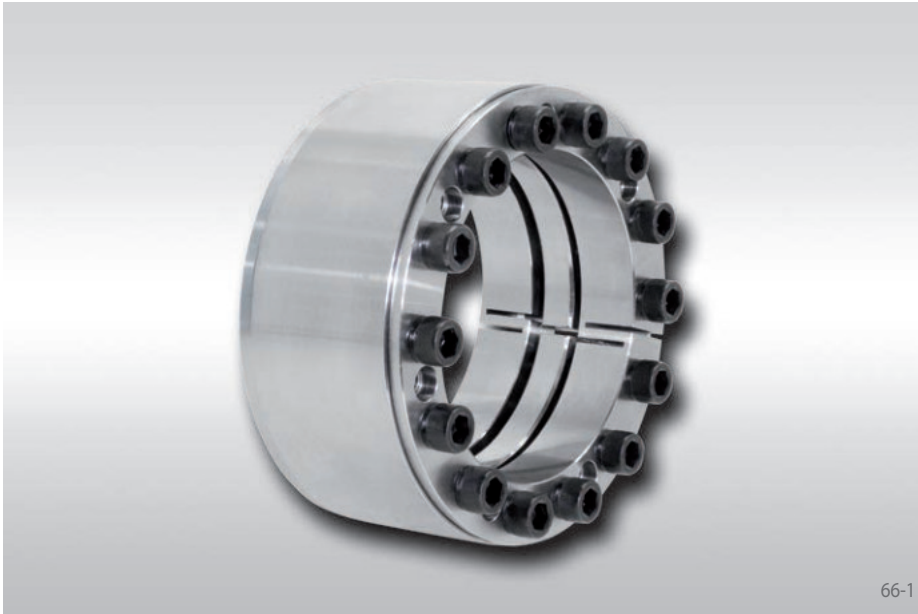


3-2

Dimensions												Technical Data								Article number
Size		Yield strength $R_e$ of the hub material [N/mm <sup>2</sup> ]										Transmissible torque or axial force		Contact pressure at		Clamping screws			Weight	
d mm	D mm	B mm	L <sub>1</sub> mm	L <sub>2</sub> mm	200		320		500		M Nm	F kN	Shaft N/mm <sup>2</sup>	Hub N/mm <sup>2</sup>	Tightening torque M <sub>S</sub> Nm	Number	Size	Length mm		
70	110	72	50	62	171	55	146	48	132	45	4100	120	113	72	48	8	M 10	50	2,4	4205-070402-000000
75	115	72	50	62	175	54	150	48	137	45	4400	120	106	69	48	8	M 10	50	2,4	4205-075402-000000
80	120	72	50	62	196	58	164	50	147	46	5800	150	124	83	48	10	M 10	50	2,6	4205-080402-000000
85	125	72	50	62	200	58	169	50	152	46	6200	150	117	80	48	10	M 10	50	2,7	4205-085402-000000
90	130	72	50	62	212	60	178	51	160	47	7200	160	121	84	48	11	M 10	50	2,8	4205-090402-000000
95	135	72	50	62	215	59	182	51	164	47	7600	160	115	81	48	11	M 10	50	3,2	4205-095402-000000
100	145	84	60	72	240	69	200	59	179	54	10700	210	127	88	84	10	M 12	60	4,0	4205-100402-000000
110	155	84	60	72	247	68	209	59	189	54	11800	210	116	82	84	10	M 12	60	4,5	4205-110402-000000
120	165	84	60	72	264	70	224	60	202	55	14000	240	117	85	84	11	M 12	60	4,7	4205-120402-000000
130	180	94	65	82	293	80	247	68	221	62	19500	300	121	87	84	14	M 12	70	6,5	4205-130402-000000
140	190	94	65	82	309	81	260	69	234	62	22500	320	120	89	84	15	M 12	70	6,6	4205-140402-000000
150	200	94	65	82	315	80	269	69	243	62	24000	320	112	84	84	15	M 12	70	8,0	4205-150402-000000
160	210	94	65	82	331	82	283	70	256	63	27500	340	112	86	84	16	M 12	70	7,5	4205-160402-000000
170	225	107	78	93	366	94	309	79	278	72	37500	440	119	90	133	15	M 14	80	10,9	4205-170402-000000
180	235	107	78	93	373	93	318	79	287	71	39500	440	112	86	133	15	M 14	80	11,5	4205-180402-000000
190	250	119	88	105	375	102	325	89	297	82	44500	470	94	72	133	16	M 14	80	14,5	4205-190402-000000
200	260	119	88	105	400	105	344	91	312	83	53000	530	101	77	133	18	M 14	80	15,0	4205-200402-000000
220	285	127	96	111	431	113	372	98	340	90	66000	600	96	74	206	15	M 16	90	20,8	4205-220402-000000
240	305	127	96	111	499	125	421	105	378	95	96000	800	117	92	206	20	M 16	90	22,3	4205-240402-000000
260	325	127	96	111	523	126	445	106	400	95	109500	840	113	91	206	21	M 16	90	22,9	4205-260402-000000
280	355	131	96	111	586	128	497	106	445	93	135500	970	131	104	415	15	M 20	90	31,0	4205-280402-000000
300	375	131	96	111	615	130	523	107	470	94	155000	1050	131	105	415	16	M 20	90	31,3	4205-300402-000000
320	405	156	124	136	646	157	550	133	496	119	206500	1300	112	88	415	20	M 20	110	48,5	4205-320402-000000
340	425	156	124	136	660	155	568	132	515	119	219500	1300	105	84	415	20	M 20	110	51,2	4205-340402-000000
360	455	177	140	155	721	175	616	149	556	134	289000	1600	110	87	567	20	M 22	130	68,4	4205-360402-000000
380	475	177	140	155	736	174	633	148	575	133	305000	1600	104	83	567	20	M 22	130	73,5	4205-380402-000000
400	495	177	140	155	778	179	667	151	604	136	353000	1750	109	88	567	22	M 22	130	75,8	4205-400402-000000
420	515	177	140	155	819	184	701	155	633	138	404500	1950	113	92	567	24	M 22	130	80,0	4205-420402-000000
440	535	177	140	155	834	183	719	154	652	138	423500	1950	108	89	567	24	M 22	130	84,0	4205-440402-000000
460	555	177	140	155	849	182	737	154	671	137	443000	1950	103	86	567	24	M 22	130	86,0	4205-460402-000000
480	575	177	140	155	876	184	762	155	695	138	481500	2000	103	86	567	25	M 22	130	87,0	4205-480402-000000
500	595	177	140	155	892	183	780	155	715	138	501500	2000	99	83	567	25	M 22	130	90,0	4205-500402-000000
520	615	177	140	155	943	190	820	160	748	142	584000	2250	107	90	567	28	M 22	130	96,0	4205-520402-000000
540	635	177	140	155	959	189	838	159	767	141	606500	2250	103	87	567	28	M 22	130	100	4205-540402-000000
560	655	182	140	160	1001	193	873	161	797	142	674000	2400	108	92	567	30	M 22	130	102	4205-560402-000000
580	675	182	140	160	1016	192	891	160	816	142	698000	2400	104	90	567	30	M 22	130	105	4205-580402-000000
600	695	182	140	160	1032	191	909	160	835	141	722000	2400	101	87	567	30	M 22	130	110	4205-600402-000000

# Cone Clamping Elements RLK 404 TC

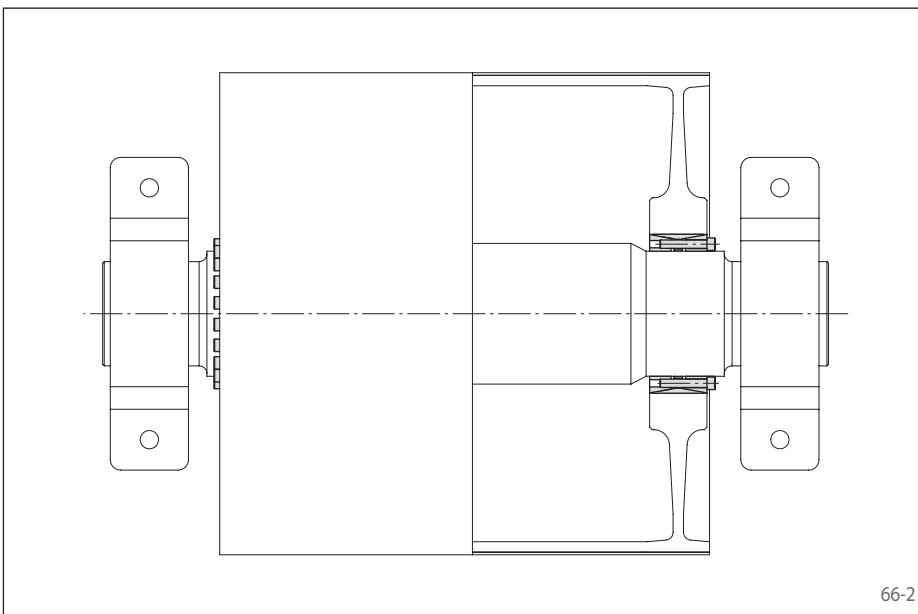
Premium quality for high centering accuracy  
Can be assembled multiple times



66-1

## Features

- Centres the shaft to the hub. Double slot for high centering accuracy.
- Can be assembled multiple times
- High transmissible torque
- No axial displacement between hub and shaft during clamping procedure
- Highest machining quality
- Transmissible torque of 7 000 Nm up to 1 206 000 Nm
- For shaft diameters between 70 mm and 600 mm



66-2

## Application example

Backlash free attachment of a belt drum to the drive shaft of a conveyor belt with an Cone Clamping Element RLK 404 TC. The Cone Clamping Element centres the belt drum on the drive shaft. As no axial shift occurs during the clamping process, the axial position of the belt drum in relation to the drive shaft remains unchanged.

## Transmissible torques and axial forces

The transmissible torques or axial forces listed on the following page are subject to the following tolerances, surface characteristics and material requirements. Please contact us in the case of deviations.

### Tolerances

- h8 for shaft diameter d
- H8 for hub bore D

### Surfaces

Average surface roughness at the contact surfaces between the shaft and the hub bore:  
 $R_z = 10 \dots 25 \mu\text{m}$ .

### Materials

The following apply to the shaft and the hub:

- E-module  $\geq 170 \text{ kN/mm}^2$

## Installation

Please request our installation and operating instructions for Cone Clamping Elements RLK 404 TC.

## Simultaneous transmission of torque and axial force

The transmissible torques M which are shown in the tables apply for axial forces  $F = 0 \text{ kN}$  and conversely, the indicated axial forces F apply to torques  $M = 0 \text{ Nm}$ . If torque and axial force are to be transmitted simultaneously, the transmissible torque and the transmissible axial force are reduced. Please refer to the technical points on pages 72 and 73.

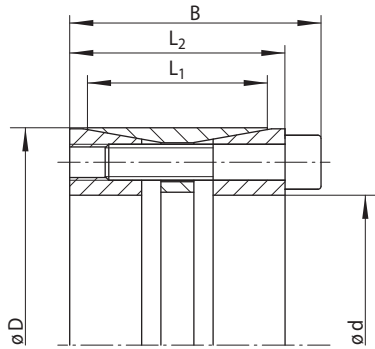
## Example for ordering

Cone Clamping Element RLK 404 TC for shaft diameter  $d = 100 \text{ mm}$ :

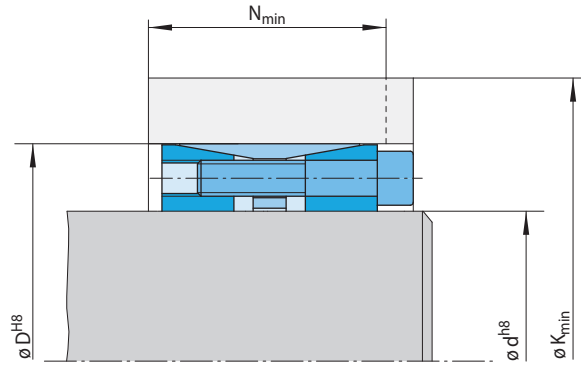
- RLK 404 TC, size 100 x 145  
Article number 4205-100401-TC0000

# Cone Clamping Elements RLK 404 TC

Premium quality for high centering accuracy  
Can be assembled multiple times



67-1

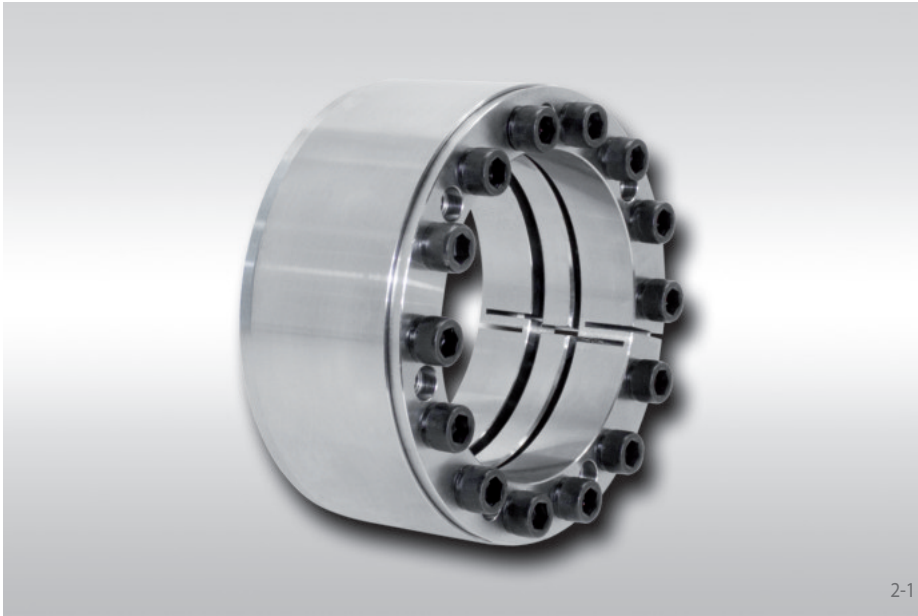


67-2

Dimensions												Technical Data								Article number
Size		B mm	L <sub>1</sub> mm	L <sub>2</sub> mm	Yield strength R <sub>e</sub> of the hub material [N/mm <sup>2</sup> ]						Transmissible torque or axial force		Contact pressure at		Clamping screws			Weight kg		
d mm	D mm				200	320	500	M	F	Shaft	Hub	Tightening torque	Number	Size	Length					
		K <sub>min</sub> mm	N <sub>min</sub> mm	K <sub>min</sub> mm	N <sub>min</sub> mm	K <sub>min</sub> mm	N <sub>min</sub> mm	N <sub>min</sub> mm	N <sub>min</sub> mm	N/mm <sup>2</sup>	kN	P <sub>w</sub> N/mm <sup>2</sup>	P <sub>N</sub> N/mm <sup>2</sup>	M <sub>S</sub> Nm		mm				
70	110	70	50	60	229	70	175	57	149	50	7000	200	190	121	83	8	M 10	50	2,5	4205-070401-TC0000
80	120	70	50	60	267	77	202	61	168	52	10000	250	208	139	83	10	M 10	50	2,6	4205-080401-TC0000
90	130	70	50	60	285	79	217	62	182	53	12400	280	203	141	83	11	M 10	50	2,9	4205-090401-TC0000
100	145	82	60	70	323	93	244	73	203	63	18500	370	204	141	144	10	M 12	60	4,1	4205-100401-TC0000
110	155	82	60	70	323	90	250	72	212	63	20000	370	185	132	144	10	M 12	60	4,5	4205-110401-TC0000
120	165	82	60	70	345	93	267	74	227	64	24500	400	187	136	144	11	M 12	60	5,0	4205-120401-TC0000
130	180	91	65	79	394	106	301	83	253	71	33500	520	203	146	144	14	M 12	65	6,6	4205-130401-TC0000
140	190	91	65	79	412	108	317	84	267	72	38500	550	202	149	144	15	M 12	65	7,1	4205-140401-TC0000
150	200	91	65	79	413	106	323	83	275	71	41500	550	188	141	144	15	M 12	65	7,5	4205-150401-TC0000
160	210	91	65	79	431	108	339	85	289	72	47000	590	188	143	144	16	M 12	65	7,8	4205-160401-TC0000
170	225	106	78	92	479	126	370	99	313	85	64000	760	189	143	229	15	M 14	75	10,8	4205-170401-TC0000
180	235	106	78	92	480	124	377	98	322	85	68000	760	179	137	229	15	M 14	75	11,3	4205-180401-TC0000
190	250	116	88	102	484	129	385	105	332	91	76500	810	160	122	229	16	M 14	80	14,8	4205-190401-TC0000
200	260	116	88	102	522	136	411	109	352	94	90500	910	171	132	229	18	M 14	80	15,7	4205-200401-TC0000
220	285	124	96	108	556	145	442	116	381	101	113500	1050	163	126	354	15	M 16	90	19,9	4205-220401-TC0000
240	305	124	96	108	666	167	514	129	433	109	165500	1400	199	157	354	20	M 16	90	21,5	4205-240401-TC0000
260	325	124	96	108	688	168	538	130	456	110	188000	1450	193	154	354	21	M 16	90	22,8	4205-260401-TC0000
280	355	130	96	110	739	173	583	134	497	113	226500	1600	200	158	692	15	M 20	90	29,0	4205-280401-TC0000
300	375	130	96	110	744	169	597	133	514	112	242500	1600	187	149	692	15	M 20	90	31,2	4205-300401-TC0000
320	405	156	124	136	827	205	652	161	557	138	345000	2150	181	143	692	20	M 20	110	45,9	4205-320401-TC0000
340	425	156	124	136	832	201	665	160	574	137	366500	2150	170	136	692	20	M 20	110	48,3	4205-340401-TC0000
360	455	177	140	155	922	229	728	181	623	154	482500	2700	177	140	945	20	M 22	130	67,9	4205-360401-TC0000
380	475	177	140	155	927	225	742	179	640	154	509000	2700	168	134	945	20	M 22	130	71,4	4205-380401-TC0000
400	495	177	140	155	984	234	785	185	675	157	589500	2900	175	142	945	22	M 22	130	74,5	4205-400401-TC0000
420	515	177	140	155	1039	243	827	190	710	161	675500	3200	182	148	945	24	M 22	130	77,8	4205-420401-TC0000
440	535	177	140	155	1045	240	841	189	727	160	707500	3200	174	143	945	24	M 22	130	81,4	4205-440401-TC0000
460	555	177	140	155	1053	237	856	188	745	160	739500	3200	166	138	945	24	M 22	130	84,1	4205-460401-TC0000
480	575	177	140	155	1083	239	884	190	770	161	804000	3400	166	138	945	25	M 22	130	88,0	4205-480401-TC0000
500	595	177	140	155	1092	236	899	188	788	161	837500	3400	159	134	945	25	M 22	130	91,6	4205-500401-TC0000
520	615	177	140	155	1164	249	951	196	829	166	975500	3800	171	145	945	28	M 22	130	94,1	4205-520401-TC0000
540	635	177	140	155	1173	247	966	195	847	165	1013000	3800	165	140	945	28	M 22	130	97,5	4205-540401-TC0000
560	655	177	140	155	1222	254	1005	200	880	169	1125500	4000	171	146	945	30	M 22	130	100,7	4205-560401-TC0000
580	675	177	140	155	1232	251	1021	199	898	168	1166000	4000	165	142	945	30	M 22	130	104,2	4205-580401-TC0000
600	695	177	140	155	1242	249	1037	198	916	168	1206000	4000	159	137	945	30	M 22	130	107,6	4205-600401-TC0000

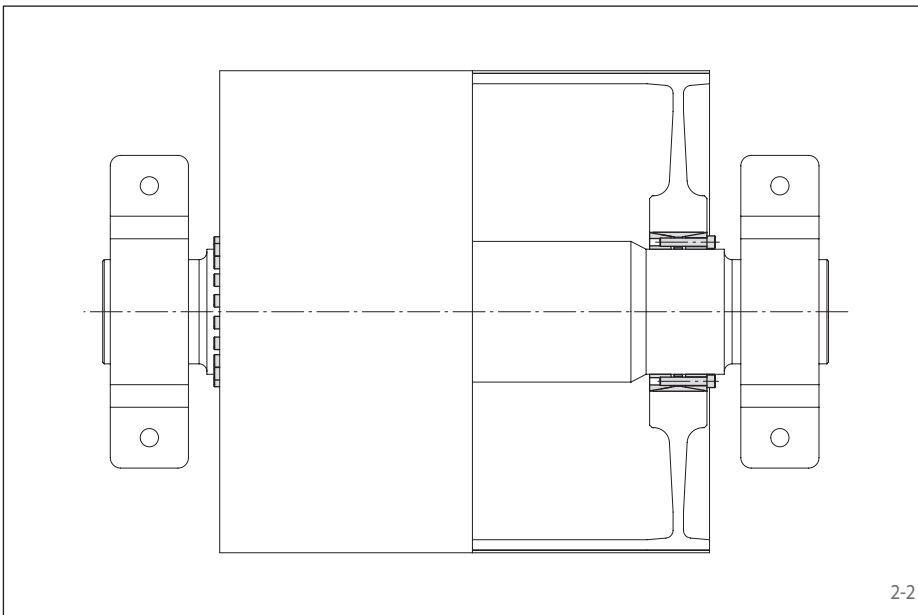
# Cone Clamping Elements RLK 404 TC light

for applications with low contact pressure  
Premium quality for high centering accuracy



## Features

- For applications with low contact pressure
- Centres the shaft to the hub. Double slot for high centering accuracy.
- Can be assembled multiple times
- No axial displacement between hub and shaft during clamping procedure
- Highest machining quality
- Transmissible torque of 4 100 Nm up to 722 000 Nm
- For shaft diameters between 70 mm and 600 mm



## Application example

Backlash free attachment of a belt drum to the drive shaft of a conveyor belt with an Cone Clamping Element RLK 404 TC light. The Cone Clamping Element centres the belt drum on the drive shaft. As no axial shift occurs during the clamping process, the axial position of the belt drum in relation to the drive shaft remains unchanged.

## Transmissible torques and axial forces

The transmissible torques or axial forces listed on the following page are subject to the following tolerances, surface characteristics and material requirements. Please contact us in the case of deviations.

### Tolerances

- h8 for shaft diameter d
- H8 for hub bore D

### Surfaces

Average surface roughness at the contact surfaces between the shaft and the hub bore:  
 $R_z = 10 \dots 25 \mu\text{m}$ .

### Materials

The following apply to the shaft and the hub:

- E-module  $\geq 170 \text{ kN/mm}^2$

## Installation

Please request our installation and operating instructions for Cone Clamping Elements RLK 404 TC light.

## Simultaneous transmission of torque and axial force

The transmissible torques M which are shown in the tables apply for axial forces  $F = 0 \text{ kN}$  and conversely, the indicated axial forces F apply to torques  $M = 0 \text{ Nm}$ . If torque and axial force are to be transmitted simultaneously, the transmissible torque and the transmissible axial force are reduced. Please refer to the technical points in catalogue „Shaft-Hub-Connections“.

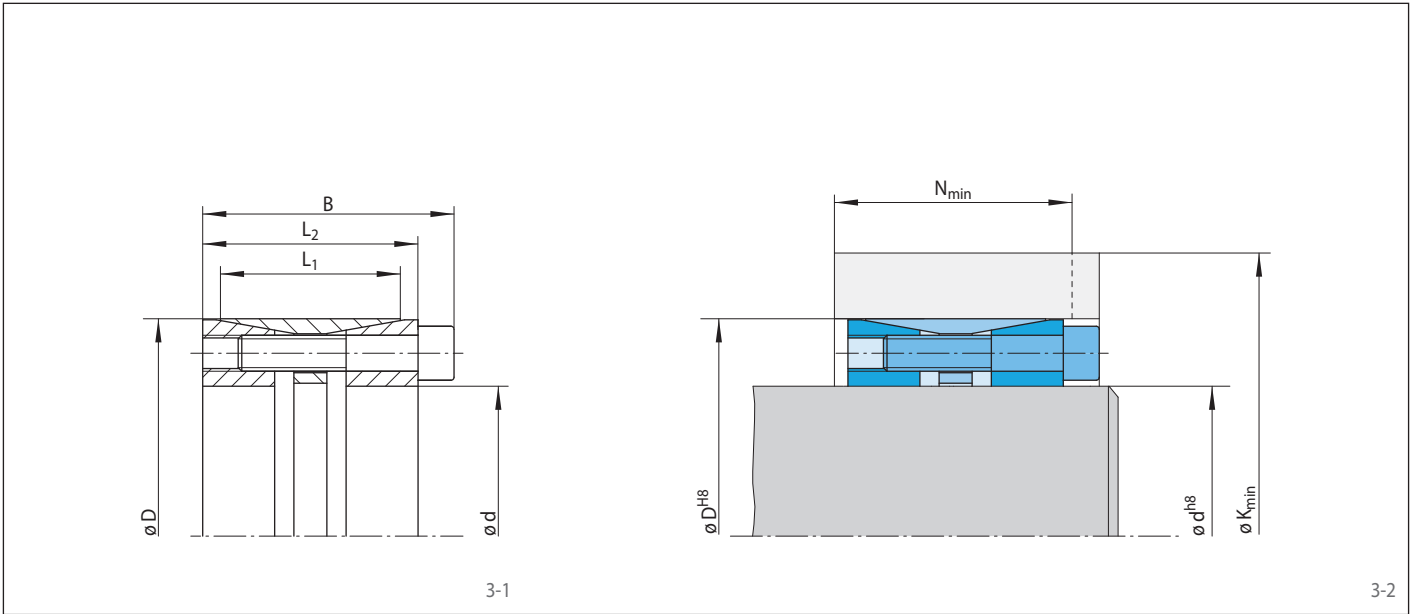
## Example for ordering

Cone Clamping Element RLK 404 TC light for shaft diameter  $d = 100 \text{ mm}$ :

- RLK 404 TC light, size 100 x 145  
Article number 4205-100402-TC0000

# Cone Clamping Elements RLK 404 TC light

for applications with low contact pressure  
Premium quality for high centering accuracy



Dimensions												Technical Data										Article number
Size		Yield strength $R_e$ of the hub material [N/mm <sup>2</sup> ]										Transmissible torque or axial force		Contact pressure at		Clamping screws				Weight		
d mm	D mm	B mm	L <sub>1</sub> mm	L <sub>2</sub> mm	200		320		500		M Nm	F kN	Shaft P <sub>W</sub> N/mm <sup>2</sup>	Hub P <sub>N</sub> N/mm <sup>2</sup>	Tightening torque M <sub>S</sub> Nm	Number	Size	Length mm	kg			
70	110	70	50	60	170	55	145	49	131	46	4100	120	111	71	48	8	M 10	50	2,5	4205-070402-TC0000		
80	120	70	50	60	195	59	163	51	147	47	5800	150	121	81	48	10	M 10	50	2,6	4205-080402-TC0000		
90	130	70	50	60	210	60	177	52	159	48	7200	160	118	82	48	11	M 10	50	2,9	4205-090402-TC0000		
100	145	82	60	70	235	71	197	61	177	56	10700	210	119	82	84	10	M 12	60	4,1	4205-100402-TC0000		
110	155	82	60	70	242	70	206	61	187	56	11800	210	108	77	84	10	M 12	60	4,5	4205-110402-TC0000		
120	165	82	60	70	259	72	221	62	200	57	14000	240	109	80	84	11	M 12	60	5,0	4205-120402-TC0000		
130	180	91	65	79	291	80	246	69	221	63	19500	300	119	86	84	14	M 12	65	6,6	4205-130402-TC0000		
140	190	91	65	79	307	82	259	70	233	63	22500	320	118	87	84	15	M 12	65	7,1	4205-140402-TC0000		
150	200	91	65	79	314	81	268	69	243	63	24000	320	110	83	84	15	M 12	65	7,5	4205-150402-TC0000		
160	210	91	65	79	329	82	282	70	255	64	27500	340	110	84	84	16	M 12	65	7,8	4205-160402-TC0000		
170	225	106	78	92	359	96	304	83	274	75	37500	440	111	84	133	15	M 14	75	10,8	4205-170402-TC0000		
180	235	106	78	92	366	96	313	82	284	75	39500	440	104	80	133	15	M 14	75	11,3	4205-180402-TC0000		
190	250	116	88	102	374	102	324	89	297	83	44500	470	94	71	133	16	M 14	80	14,8	4205-190402-TC0000		
200	260	116	88	102	399	106	343	92	312	84	53000	530	100	77	133	18	M 14	80	15,7	4205-200402-TC0000		
220	285	124	96	108	430	113	372	99	339	91	66000	600	95	73	206	15	M 16	90	19,9	4205-220402-TC0000		
240	305	124	96	108	498	125	420	106	377	95	96000	800	116	91	206	20	M 16	90	21,5	4205-240402-TC0000		
260	325	124	96	108	522	126	444	107	400	96	109500	840	112	90	206	21	M 16	90	22,8	4205-260402-TC0000		
280	355	130	96	110	573	132	488	110	439	98	135500	970	120	95	415	15	M 20	90	29,0	4205-280402-TC0000		
300	375	130	96	110	587	130	505	110	458	98	145000	970	112	90	415	15	M 20	90	31,2	4205-300402-TC0000		
320	405	156	124	136	640	158	546	135	494	122	206500	1300	108	86	415	20	M 20	110	45,9	4205-320402-TC0000		
340	425	156	124	136	655	157	564	134	513	122	219500	1300	102	82	415	20	M 20	110	48,3	4205-340402-TC0000		
360	455	177	140	155	715	177	611	151	553	137	289000	1600	106	84	567	20	M 22	130	67,9	4205-360402-TC0000		
380	475	177	140	155	729	176	629	151	572	137	305000	1600	100	80	567	20	M 22	130	71,4	4205-380402-TC0000		
400	495	177	140	155	771	181	663	154	601	139	353000	1750	105	85	567	22	M 22	130	74,5	4205-400402-TC0000		
420	515	177	140	155	812	187	696	158	630	141	404500	1950	109	89	567	24	M 22	130	77,8	4205-420402-TC0000		
440	535	177	140	155	827	185	714	157	649	141	423500	1950	104	86	567	24	M 22	130	81,4	4205-440402-TC0000		
460	555	177	140	155	842	184	732	157	668	141	443000	1950	100	83	567	24	M 22	130	84,1	4205-460402-TC0000		
480	575	177	140	155	870	186	757	158	692	142	481500	2000	99	83	567	25	M 22	130	88,0	4205-480402-TC0000		
500	595	177	140	155	885	185	776	158	711	141	501500	2000	95	80	567	25	M 22	130	91,6	4205-500402-TC0000		
520	615	177	140	155	936	193	815	162	744	145	584000	2250	103	87	567	28	M 22	130	94,1	4205-520402-TC0000		
540	635	177	140	155	952	192	833	162	763	144	606500	2250	99	84	567	28	M 22	130	97,5	4205-540402-TC0000		
560	655	177	140	155	990	196	865	165	791	146	674000	2400	102	88	567	30	M 22	130	101	4205-560402-TC0000		
580	675	177	140	155	1006	195	884	165	811	146	698000	2400	99	85	567	30	M 22	130	104	4205-580402-TC0000		
600	695	177	140	155	1022	194	902	164	830	146	722000	2400	95	83	567	30	M 22	130	108	4205-600402-TC0000		



**Morskate®**



Any questions? Please contact us.

**Morskate Aandrijvingen BV**

Oosterveldsingel 47A  
7558 PJ Hengelo (Ov)  
The Netherlands

NL

T +31 (0)74 - 760 11 11  
info@morskateaandrijvingen.nl  
www.morskateaandrijvingen.nl

DE

T +49 692 - 222 34 95  
info@morskateantriebstechnik.de  
www.morskateantriebstechnik.de

EN

T +31 (0)74 - 760 11 11  
info@morskatedrivetechnology.com  
www.morskatedrivetechnology.com